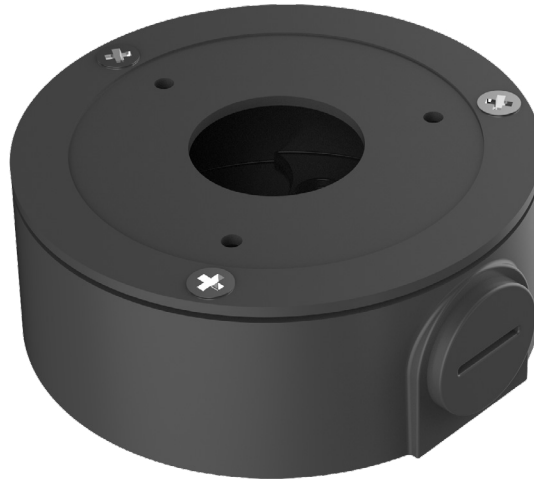


J4-G

WATER PROOF JUNCTION BOX



| General | |
|-----------------------|----------------------------------|
| Material | Aluminum & SECC |
| Dimension | Φ90.0mmx35.0mm (Φ3.54"x1.38") |
| Inch Thread | M20(G1/2") |
| Load Bearing | 1.0kg(2.2lb) |
| Weight | 0.26kg(0.57lb) |
| Color | White |
| Operating Temperature | -40°C~+60°C(-40°F~+140°F) |
| Humidity | 0~90% RH |
| Applicable Model | Please see "Accessory Selection" |

