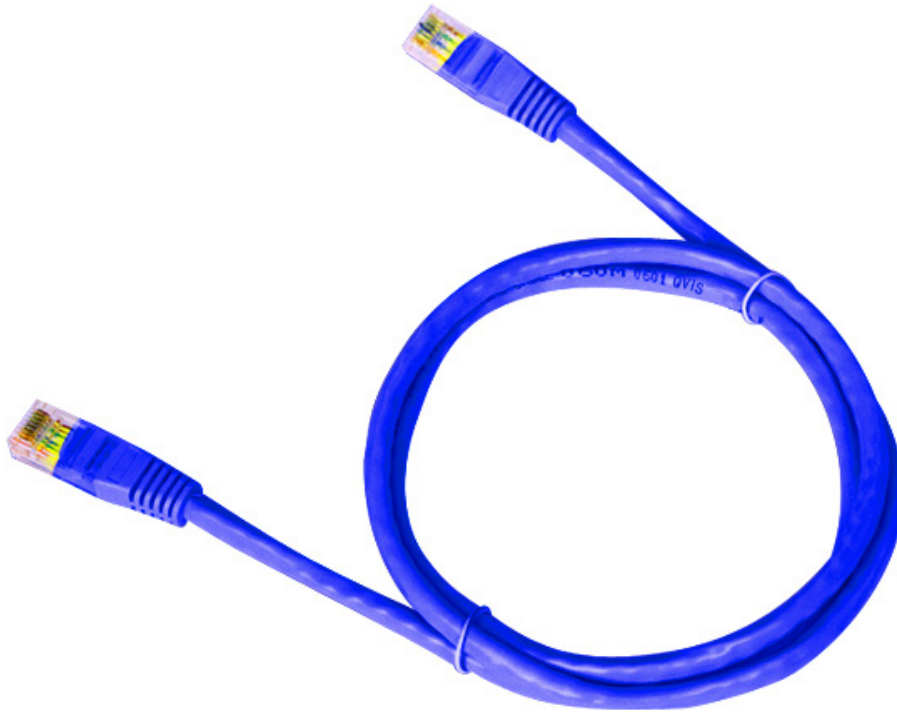


CAT5E-5B

CAT 5E HDPE INSULATED PATCH CABLE (5m)



Specifications	
Cable Length	5m
Conductor	7/0.16mm Full Copper
Insulation	HDPE
Inside Diameter	0.93mm
Overall Diameter	5.0mm
Jacket Thickness	0.55mm
Jacket	Blue PVC
Certification	ISO9001

Antenna	Built-in 5G directional dual polarized antenna 8 dBi gain Horizontal angle: 40 degrees; vertical angle 30 degrees
Power Consumption	<7W
Operating Temperature	-30°C~55°C
Storage Temperature	-40°C~70°C
Operating Humidity	10% ~ 90%RH non condensation
Storage Humidity	5% ~ 90%RH non condensing
Support Power	On at -40°C
Dimensions	200mm * 110mm * 61mm