



# AI Fixed Lens Bullet Camera

CODE: BULLETVIP4MPE3-FW-A



Fixed Lens



People & Vehicle Detection



30m IR Range



Intelligent Analytics

## Camera

Image Sensor	1/3" CMOS
Video Compression	H.265+ / H.265 / H.264+ / H.264
Resolution	4MP, 2K, 3MP, 2MP (1 to 25fps)
Minimum Illumination	0.005 lux at F1.6 (AGC on); 0 lux with IR or LED
IR Range	30m
Lens	2.8mm
Field of View	<b>Horizontal:</b> 95.3° <b>Vertical:</b> 53.2° <b>Diagonal:</b> 100.7°
Focus	Fixed
Image Correction	BLC, HLC, WDR, Defog, Digital NR
Detect	60.69m (191.11ft.)
Observe	24.28m (79.65ft.)
Recognise	12.14m (39.82ft.)
Identify	6.07m (19.91ft.)

## Interfaces

Network	RJ45
Audio	1CH audio input
Storage	Micro SD card slot (supports up to 256GB)
Reset Button	Yes

## Functions

Remote Monitoring	SuperLive Plus Mobile App / NVMS (used with Viper NVR)
Online Connection	Simultaneous multi-stream real time transmission
Maximum Users for Monitoring	Up to 10 users (simultaneous)
Network Protocol	UDP, IPv4, IPv6, DHCP, NTP, RTSP, RTP, RTCP, ICMP, IGMP, PPPoE, DDNS, SMTP, FTP, SNMP, HTTP, 802.1x, UPnP, HTTPS, QoS



# AI Fixed Lens Bullet Camera

CODE: BULLETVIP4MPE3-FW-A

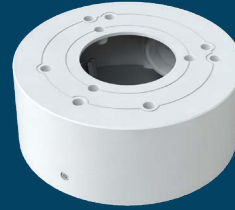
IP

4MP

## Functions (continued)

Interface Protocol	ONVIF
AI Events	Line Crossing Detection, Region Intrusion Detection (People & Vehicle), Video Abnormality, Face Detection & Capture, Exception Detection
Additional Functions	Watermark, Video Mask, Heartbeat, Password Protection

## Compatible Accessories



### Cable Management Ring

CODE: VIP-RING-03-WH

## Parameters & Dimensions

Power Supply	DC12V / PoE
PoE	IEEE802.3af
Power Consumption	< 6W
Operating Environment	Temperature: -30°C to +60°C; Humidity: Less than 95% (non-condensing)
Storage Environment	Temperature: -30°C to +65°C; Humidity: Less than 95% (non-condensing)
Dimensions	167.5mm x 74.5mm x 74.5mm
Weight	0.432kg
Installation	Ceiling or wall mounted
Protection Grade	IP67
Certificate	UKCA, CE, FCC, PSTI 2023, RoHS, WEEE, REACH (EC1907/2006)