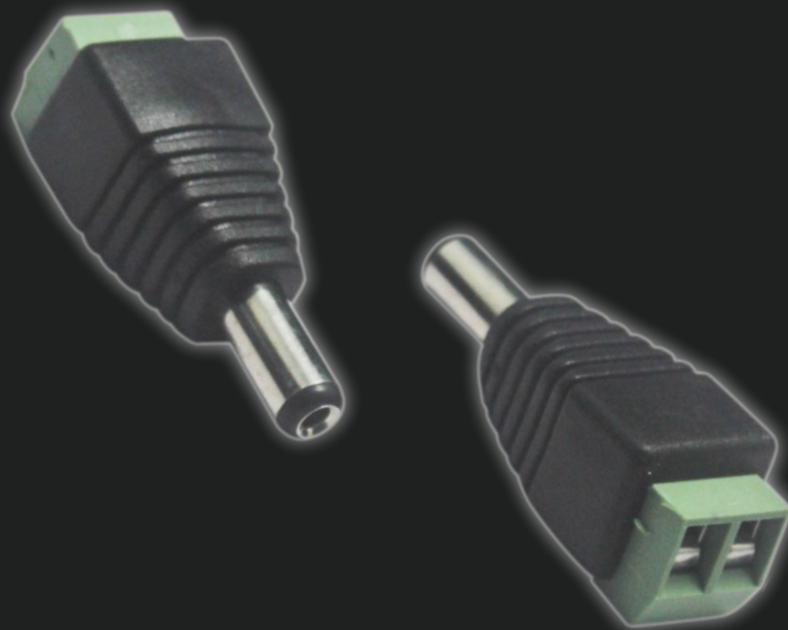


MALE DC CONNECTORS (BAG OF 100)

Titus

CODE: DC2.1-100



Connector Size		5.5mm x 2.1mm
Connector Type		DC Male to Screw (2-Pin)
Dielectric Withstanding Voltage		1500V (r ms)
Characteristic Impedance		75Ω
Frequency Range		DC~1GHz
Durability		Up to 500 Cycles
Center Conductor Retention Force		≥ 0.2 N
Voltage Standing Wave Ratio		≤1.30
Connector 2-Pin		Screw / Weld Type
Materials	Body	Plastic
	Pin Contact	Silver Plated
	Resilient Contact	Silver Plated
	Gaskets	Silicon Rubber
	Crimp Ferrules	Silver Plated