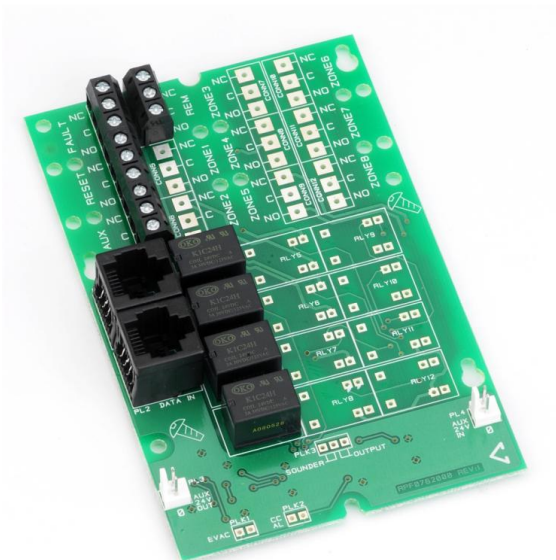


CFP Relay Output Card (Reset, Fault, Aux. & Remote Relay Outputs)

Part No. **CFP762**



Overview

An optional system expansion device for use with CFP Standard 2-8 Zone Fire Panels or CFP AlarmSense 2-8 Zone Fire Panels.

Provides four panel-controlled volt free relay outputs (reset, fault, aux. fire and remote).

PCB mounts inside the CFP fire panel.

Reset relay is active during the panel's reset cycle.

Fault relay is active in any fault condition. This relay is failsafe and normally energised - if power is removed from the panel the relay will changeover to produce a fault signal.

Aux. fire relay is active in an alarm condition provided all relevant delays have expired.

Remote relay is active during any Alarm Condition provided all relevant delays have expired.

Outputs are NOT designed to switch mains voltages.

Technical Specifications

Product dimensions (mm)	82 W x 125 H x D 23mm.
Weight	64g.
Properties	Single pole changeover contacts; Rated at 1A 50V; 50V Isolation between relays, contacts and CFP & relays; 27mA active relay coil current @ 27.6V supply.