



Fixed Lens Turret Camera

CODE: TURVIPS4-6-FG



Fixed Lens



People & Vehicle Detection



30m IR Range



Built-In Microphone

Camera

| | |
|----------------------|--|
| Image Sensor | 1/2.7" CMOS |
| Video Compression | H.265+ / H.265 / H.264+ / H.264 |
| Resolution | 6MP, 5MP (1 to 20fps), 4MP, 3MP, 2MP (1 to 25fps) |
| Electronic Shutter | 1/1s to 1/100,000s |
| Minimum Illumination | 0.007 lux at F1.6 (AGC on); 0 lux with IR |
| IR Distance | 30m |
| Lens | 2.8mm |
| Field of View | Horizontal: 110.5° Vertical: 57° Diagonal: 131° |
| Focus | Fixed |
| Day & Night | ICR |
| Image Correction | BLC, HLC, WDR, Digital NR |
| Detect | 59.67m (195.76ft.) |
| Observe | 23.87m (78.31ft.) |
| Recognise | 11.93m (39.14ft.) |
| Identify | 5.97m (19.58ft.) |

Interfaces

| | |
|--------------|--|
| Network | RJ45 |
| Audio | 1CH audio input; 1CH built-in microphone |
| Storage | Micro SD card slot (supports up to 256GB) |
| Reset Button | Yes |

Functions

| | |
|------------------------------|---|
| Remote Monitoring | SuperLive Plus Mobile App / NVMS (used with Viper NVR) |
| Web Browser | IE (plug-in required); Google Chrome; Microsoft Edge; Firefox; Safari |
| Online Connection | Simultaneous multi-stream real time transmission |
| Maximum Users for Monitoring | Up to 10 users (simultaneous) |
| Network Protocol | UDP, IPv4, IPv6, DHCP, NTP, RTSP, RTP, RTCP, PPPoE, DDNS, SMTP, FTP, 802.1x, SNMP, UPnP, RTMP, HTTP, HTTPS, QoS |
| Interface Protocol | ONVIF |



Fixed Lens Turret Camera

CODE: TURVIPS4-6-FG

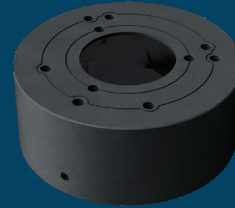
IP

6MP

Functions (continued)

| | |
|----------------------|--|
| Alarm Events | Video Motion Detection, SD Card Error, SD Card Full |
| AI Events | Line Crossing Detection, Region Intrusion Detection (People & Vehicle), Abandoned/Missing Object Detection |
| Additional Functions | Watermark, Video Mask, Heartbeat, Corridor Mode |

Compatible Accessories



Cable Management Ring
CODE: VIP-RING-03-GR

Parameters & Dimensions

| | |
|-----------------------|--|
| Power Supply | DC12V / PoE |
| PoE | IEEE802.3af |
| Power Consumption | < 5.5W |
| Operating Environment | Temperature: -30°C to +60°C; Humidity: Less than 95% (non-condensing) |
| Storage Environment | Temperature: -30°C to +65°C; Humidity: Less than 95% (non-condensing) |
| Dimensions | Ø94.6mm x 82.8mm |
| Weight | 0.46kg |
| Installation | Ceiling or wall mounted |
| Protection Grade | IP67 |
| Certificate | UKCA, CE, FCC, PSTI 2023, RoHS, WEEE, REACH (EC1907/2006) |