



Fixed Lens Turret Camera

CODE: TURVIPS4-2-FG-A



Fixed Lens



Built-In Microphone



30m IR Range



PoE Support

Camera

Image Sensor	1/2.8" CMOS
Video Compression	H.265+ / H.265 / H.264+ / H.264
Resolution	2MP (1 to 25fps)
Electronic Shutter	1/3s to 1/100,000s
Minimum Illumination	0.008 lux at F1.6 (AGC on); 0 lux with IR
IR Distance	30m
Lens	2.8mm
Field of View	Horizontal: 107° Vertical: 56° Diagonal: 126°
Focus	Fixed
Day & Night	ICR
Image Correction	BLC, HLC, WDR, Digital NR
Detect	40.62m (133.2ft.)
Observe	16.25m (53.31ft.)
Recognise	8.12m (26.64ft.)
Identify	4.06m (13.32ft.)

Interfaces

Network	RJ45
Audio	1CH audio input; 1CH built-in microphone
Storage	Micro SD card slot (supports up to 256GB)
Reset Button	Yes

Functions

Remote Monitoring	SuperLive Plus Mobile App / NVMS (used with Viper NVR)
Web Browser	IE (plug-in required); Google Chrome; Microsoft Edge; Firefox; Safari
Online Connection	Simultaneous multi-stream real time transmission
Maximum Users for Monitoring	Up to 3 users (simultaneous)
Network Protocol	UDP, IPv4, IPv6, DHCP, NTP, RTSP, RTP, RTCP, PPPoE, DDNS, SMTP, FTP, 802.1x, SNMP, UPnP, RTMP, HTTP, HTTPS, QoS
Interface Protocol	ONVIF



Fixed Lens Turret Camera

CODE: TURVIPS4-2-FG-A

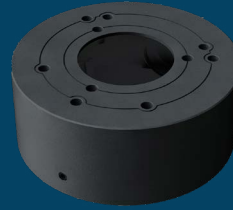
IP

2" MP

Functions (continued)

Alarm Events	Video Motion Detection, SD Card Error, SD Card Full
AI Events	Line Crossing Detection, Region Intrusion Detection (People & Vehicle), Abandoned/Missing Object Detection
Additional Functions	Watermark, Video Mask, Heartbeat, Corridor Mode

Compatible Accessories



Cable Management Ring
CODE: VIP-RING-03-GR

Parameters & Dimensions

Power Supply	DC12V / PoE
PoE	IEEE802.3af
Power Consumption	< 4.5W
Operating Environment	Temperature: -30°C to +60°C; Humidity: Less than 95% (non-condensing)
Storage Environment	Temperature: -30°C to +65°C; Humidity: Less than 95% (non-condensing)
Dimensions	Ø94.6mm x 82.8mm
Weight	0.46kg
Installation	Ceiling or wall mounted
Protection Grade	IP67
Certificate	UKCA, CE, FCC, PSTI 2023, RoHS, WEEE, REACH (EC1907/2006)