



# Dual-Illumination Fixed Lens Turret Camera

CODE: TURVIP-6IL-FW

IP

6MP

NDA  
Compliant



Fixed  
Lens



People &  
Vehicle Detection



Smart Dual  
Illumination



Built-in  
Microphone

## Camera

Image Sensor	1/2.5" CMOS
Video Compression	H.265+ / H.265 / H.264+ / H.264
Resolution	6MP (1 to 20fps), 4MP, 2MP (1 to 25fps)
Electronic Shutter	1/4s to 1/100,000s
Minimum Illumination	0.008 lux at F1.6 (AGC on); 0 lux with IR
Light Range	<b>IR Range:</b> 30m <b>White Light Range:</b> 30m
Lens	2.8mm
Field of View	<b>Horizontal:</b> 104° <b>Vertical:</b> 55° <b>Diagonal:</b> 128°
Focus	Fixed
Day & Night	ICR
Image Correction	BLC, HLC, WDR, Digital NR
S/N Ratio	≥50dB
Detect	69m (226ft.)
Observe	28m (92ft.)
Recognise	14m (46ft.)
Identify	7m (23ft.)

## Interfaces

Network	RJ45
Audio	1CH audio input; 1CH built-in microphone
Storage	Micro SD card slot (supports up to 256GB)
Reset Button	Yes

## Functions

Remote Monitoring	SuperLive Plus Mobile App / NVMS (used with Viper NVR)
Web Browser	IE (plug-in required); Google Chrome; Microsoft Edge; Firefox; Safari
Online Connection	Simultaneous multi-stream real time transmission
Maximum Users for Monitoring	Up to 6 users (simultaneous)
Network Protocol	UDP, IPv4, IPv6, DHCP, NTP, RTSP, RTP, RTCP, PPPoE, DDNS, SMTP, FTP, 802.1x, SNMP, UPnP, RTMP, HTTP, HTTPS, HTTP POST, P2P, QoS
Interface Protocol	ONVIF



# Dual-Illumination Fixed Lens Turret Camera

CODE: TURVIP-6IL-FW

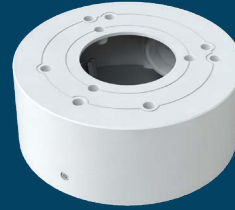
IP

6MP

## Functions (continued)

Alarm Events	Video Motion Detection, Video Exception, SD Card Error, SD Card Full
AI Events	Line Crossing Detection, Region Intrusion Detection (People & Vehicle), Abandoned/Missing Object Detection
Additional Functions	Watermark, Video Mask, Heartbeat, Corridor Mode
Security	HTTPs encryption, Configuration encryption, Illegal login lock, IP address filtering, 802.1x authentication, Basic and digest authentication for HTTP

## Compatible Accessories



Cable Management Ring  
CODE: VIP-RING-03-WH

## Parameters & Dimensions

Power Supply	DC12V / PoE
PoE	IEEE802.3af
Power Consumption	< 6.5W
Operating Environment	Temperature: -30°C to +60°C; Humidity: Less than 95% (non-condensing)
Storage Environment	Temperature: -30°C to +65°C; Humidity: Less than 95% (non-condensing)
Dimensions	Ø94.6mm x 82.8mm
Weight	0.45kg
Installation	Ceiling or wall mounted
Protection Grade	IP67
Certificate	UKCA, CE, FCC, PSTI 2023, RoHS, WEEE, REACH (EC1907/2006)