



Dual-Illumination Fixed Lens Turret Camera

CODE: TURVIP-4KIL-FW



Fixed Lens



People & Vehicle Detection



Smart Dual Illumination



Built-in Microphone

Camera

Image Sensor	1/2.8" CMOS
Video Compression	H.265+ / H.265 / H.264+ / H.264
Resolution	8MP (1 to 20fps), 6MP, 4MP, 2K, 2MP (1 to 25fps)
Electronic Shutter	1/3s to 1/100,000s
Minimum Illumination	0.02 lux at F1.6 (AGC on); 0 lux with IR
Light Range	IR Range: 30m White Light Range: 30m
Lens	2.8mm
Field of View	Horizontal: 106° Vertical: 57° Diagonal: 124°
Focus	Fixed
Day & Night	ICR
Image Correction	BLC, HLC, WDR, Digital NR
S/N Ratio	≥50dB
Detect	79m (259ft.)
Observe	32m (105ft.)
Recognise	16m (52ft.)
Identify	8m (27ft.)

Interfaces

Network	RJ45
Audio	1CH audio input; 1CH built-in microphone
Storage	Micro SD card slot (supports up to 256GB)
Reset Button	Yes

Functions

Remote Monitoring	SuperLive Plus Mobile App / NVMS (used with Viper NVR)
Web Browser	IE (plug-in required); Google Chrome; Microsoft Edge; Firefox; Safari
Online Connection	Simultaneous multi-stream real time transmission
Maximum Users for Monitoring	Up to 10 users (simultaneous)
Network Protocol	UDP, IPv4, IPv6, DHCP, NTP, RTSP, RTP, RTCP, PPPoE, DDNS, SMTP, FTP, 802.1x, SNMP, UPnP, RTMP, HTTP, HTTPS, HTTP POST, P2P, QoS
Interface Protocol	ONVIF



Dual-Illumination Fixed Lens Turret Camera

CODE: TURVIP-4KIL-FW

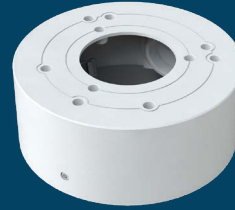
IP

8^{4K}
MP

⚙️ Functions (continued)

Alarm Events	Video Motion Detection, Video Exception, SD Card Error, SD Card Full
AI Events	Line Crossing Detection, Region Intrusion Detection (People & Vehicle), Abandoned/Missing Object Detection
Additional Functions	Watermark, Video Mask, Heartbeat, Corridor Mode, Image Distortion Correction, ANR
Security	HTTPs encryption, Configuration encryption, Illegal login lock, IP address filtering, 802.1x authentication, Basic and digest authentication for HTTP

+ Compatible Accessories



Cable Management Ring
CODE: VIP-RING-03-WH

🛒 Parameters & Dimensions

Power Supply	DC12V / PoE
PoE	IEEE802.3af
Power Consumption	< 6.5W
Operating Environment	Temperature: -30°C to +60°C; Humidity: Less than 95% (non-condensing)
Storage Environment	Temperature: -30°C to +65°C; Humidity: Less than 95% (non-condensing)
Dimensions	Ø94.6mm x 82.8mm
Weight	0.45kg
Installation	Ceiling or wall mounted
Protection Grade	IP67
Certificate	UKCA, CE, FCC, PSTI 2023, RoHS, WEEE, REACH (EC1907/2006)