



Dual-Illumination Motorised Lens Turret Camera

CODE: MTURVIP4KS4-IL-VW-A



Motorised Zoom Lens



People & Vehicle Detection



Smart Dual Illumination



Built-In Microphone

Camera

Image Sensor	1/2.8" CMOS	
Video Compression	H.265+ / H.265 / H.264+ / H.264	
Resolution	8MP (1 to 20fps), 6MP, 4MP, 2K, 2MP (1 to 25fps)	
Electronic Shutter	1/3s to 1/100,000s	
Minimum Illumination	0.02 lux at F1.6 (AGC on); 0 lux with IR	
IR Range	IR Range: 50m White Light Range: 40m	
Lens	2.8mm to 12mm	
Field of View	Horizontal: 97.3° to 34° Vertical: 52.3° to 17.7° Diagonal: 116° to 37°	
Focus	Motorised	
Image Correction	BLC, HLC, WDR, Defog, Digital NR	
S/N Ratio	≥50dB	
Detect	W	88m (288ft.)
	T	277m (908ft.)
Observe	W	35m (114ft.)
	T	111m (364ft.)
Recognise	W	17m (56ft.)
	T	55m (180ft.)
Identify	W	8m (27ft.)
	T	28m (91ft.)

Interfaces

Network	RJ45
Audio	1CH audio input; 1CH built-in microphone
Storage	Micro SD card slot (supports up to 256GB)
Reset Button	Yes

Functions

Remote Monitoring	SuperLive Plus Mobile App / NVMS (used with Viper NVR)
Online Connection	Simultaneous multi-stream real time transmission
Maximum Users for Monitoring	Up to 10 users (simultaneous)
Network Protocol	UDP, IPv4, IPv6, DHCP, NTP, RTSP, RTP, RTCP, ICMP, IGMP, PPPoE, DDNS, SMTP, FTP, SNMP, HTTP, 802.1x, UPnP, HTTPs, QoS
Interface Protocol	ONVIF



Dual-Illumination Motorised Lens Turret Camera

CODE: MTURVIP4KS4-IL-VW-A

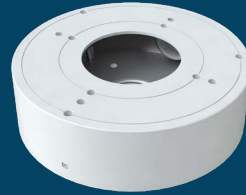
IP

8^{4K}
MP

Functions (continued)

Alarm Events	Video Motion Detection, Video Exception, SD Card Error, SD Card Full
AI Events	Line Crossing Detection, Scene Change Detection, People & Vehicle Detection, Intruder Detection, Abandoned/Missing Object
Additional Functions	Watermark, Video Mask, Heartbeat, Password Protection, ANR, Image Distortion Correction

Compatible Accessories



Cable Management Ring
CODE: VIP-RING-04-WH



Cable Management Ring
CODE: VIP-RING-06-WH

Parameters & Dimensions

Power Supply	DC12V / PoE
PoE	IEEE802.3af
Power Consumption	< 12W
Operating Environment	Temperature: -30°C to +60°C; Humidity: Less than 95% (non-condensing)
Dimensions	Ø111.6mm x 99.6mm
Weight	0.66kg
Installation	Ceiling or wall mounted
Protection Grade	IP67
Certificate	UKCA, CE, FCC, PSTI 2023, RoHS, WEEE, REACH (EC1907/2006)