



Dual-Illumination Motorised Lens Turret Camera

CODE: MTURVIP-6IL-VG

IP

6MP

NDA
Compliant



People &
Vehicle Detection



Built-In
Microphone



White Light
& IR



Triple Stream
Support

Camera

Image Sensor	1/2.5" CMOS
Video Compression	H.265+ / H.265 / H.264+ / H.264
Resolution	6MP (1 to 20fps), 4MP (1 to 25fps), 2MP (1 to 25fps)
Electronic Shutter	1/4s to 1/100,000s
Minimum Illumination	0.008 lux at F1.6 (AGC on); 0 lux with IR
Light Range	IR Range: 50m White Light Range: 40m
Lens	2.8mm to 12mm
Field of View	Horizontal: 108° to 36° Vertical: 57° to 20° Diagonal: 129° to 42°
Focus	Motorised
Day & Night	ICR
Detect	Wide-Angle 66m (218ft.) Telephoto 204m (669ft.)
Observe	Wide-Angle 27m (87ft.) Telephoto 82m (269ft.)
Recognise	Wide-Angle 13m (44ft.) Telephoto 41m (135ft.)
Identify	Wide-Angle 7m (23ft.) Telephoto 20m (66ft.)

Image Correction	BLC, HLC, WDR, Digital NR
S/N Ratio	≥50dB

Interfaces

Network	RJ45
Audio	1CH audio input; 1CH built-in microphone
Storage	Micro SD card slot (supports up to 256GB)
Reset Button	Yes

Functions

Remote Monitoring	SuperLive Plus Mobile App / NVMS (used with Viper NVR)
Web Browser	IE (plug-in required); Google Chrome; Microsoft Edge; Firefox; Safari
Online Connection	Simultaneous multi-stream real time transmission



Dual-Illumination Motorised Lens Turret Camera

CODE: MTURVIP-6IL-VG

IP

6MP

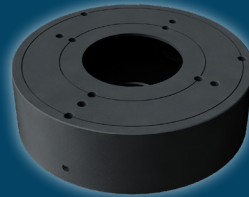


Functions (continued)

Maximum Users for Monitoring	Up to 6 users (simultaneous)
Network Protocol	UDP, IPv4, IPv6, DHCP, NTP, RTSP, RTP, RTCP, PPPoE, DDNS, SMTP, FTP, 802.1x, SNMP, UPnP, RTMP, HTTP, HTTPS, HTTP POST, P2P, QoS
Interface Protocol	ONVIF
Alarm Events	Video Motion Detection, Video Exception, SD Card Error, SD Card Full
AI Events	Line Crossing Detection, Region Intrusion Detection (People & Vehicle), Abandoned/Missing Object Detection
Additional Functions	Watermark, Video Mask, Heartbeat, Corridor Mode
Security	HTTPS Encryption, Configuration Encryption, Illegal Login Lock, IP Address Filtering, 802.1x Authentication, Basic and Digest Authentication for HTTP/RTSP



Compatible Accessories



Cable Management Ring
CODE: VIP-RING-04-GR



Wall Bracket
CODE: VIP-WALL-BK0203-G



Parameters & Dimensions

Power Supply	DC12V / PoE
PoE	IEEE802.3af
Power Consumption	< 9.5W
Operating Environment	Temperature: -30°C to +60°C; Humidity: Less than 95% (non-condensing)
Storage Environment	Temperature: -30°C to +65°C; Humidity: Less than 95% (non-condensing)
Dimensions	Ø111.6mm x 99.6mm
Weight	0.66kg
Installation	Ceiling or wall mounted
Protection Grade	IP67
Certificate	UKCA, CE, FCC, PSTI 2023, RoHS, WEEE, REACH (EC1907/2006)