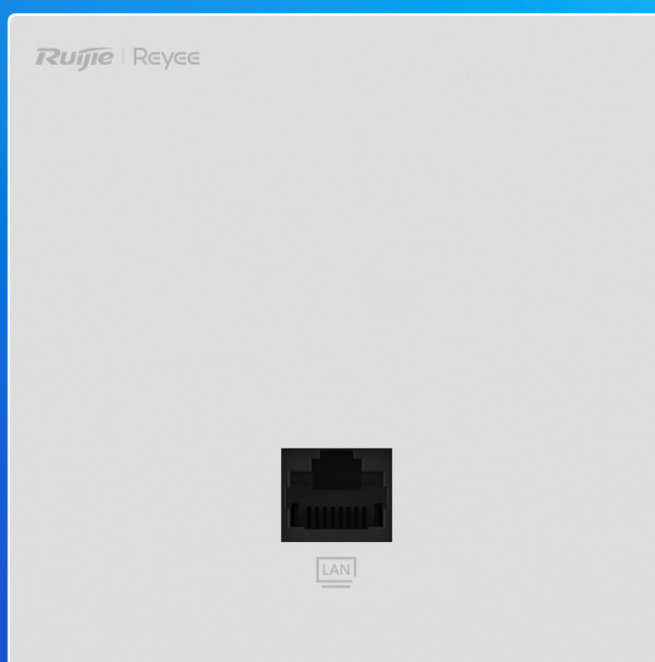


# RG-RAP1261

## Reyee Wi-Fi 6 AX3000 Ultra-Thin Wall Plate Access Point



### Highlights

- Dual-radio performance, gigabit wireless wall-mounted AP
- Better experience with Cooling Patent Technology
- Easy installation, 86mm standard compatible
- Capable of Reyee Mesh and 802.11K/V/R
- Powerful Standalone Portal via Ruijie Cloud

## Highlight Features

### AX3000 Dual-Band Ultra-Thin Wall Plate Access Point

RG-RAP1261



8.5mm  
Ultra Thin



2.4G/5G



2x2 MIMO



Cooling Patent



PoE in 802.3af

### Experience Wi-Fi 6, Experience Gigabit Internet

New upgrade to AX3000, Speed Test reaches 950Mbps, delivering the fastest possible internet experience



Wi-Fi5

Download  
Mbps: 418

Download  
Mbps: 950



RG-RAP1261

Wi-Fi6

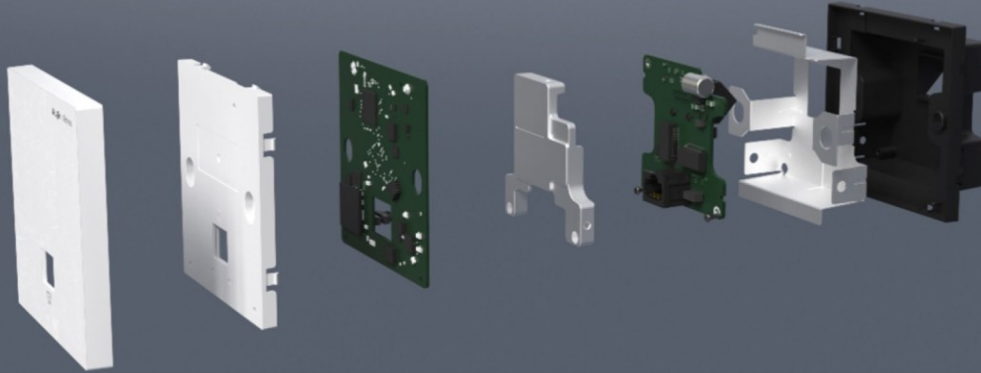
### Easy Installation, Worldwide Compatible



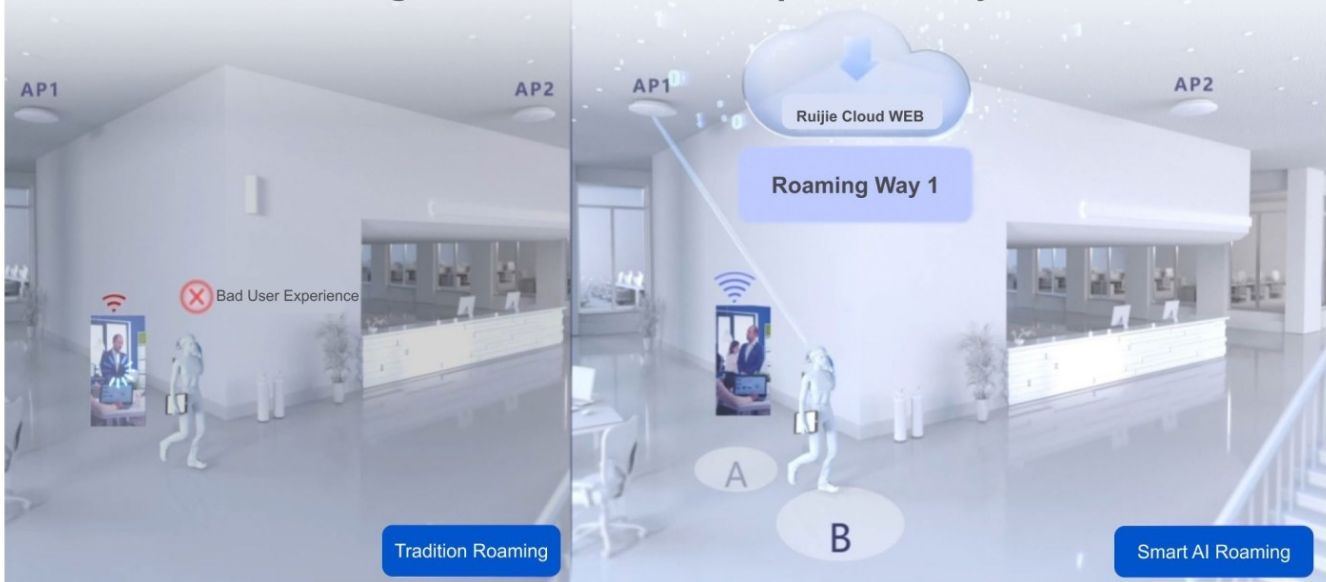
## Highlight Features

### Unprecedented This Design with 8.5mm and Patent Technology

Thinner, Cooler, Stronger. Averagely reduced 7.c in working mode

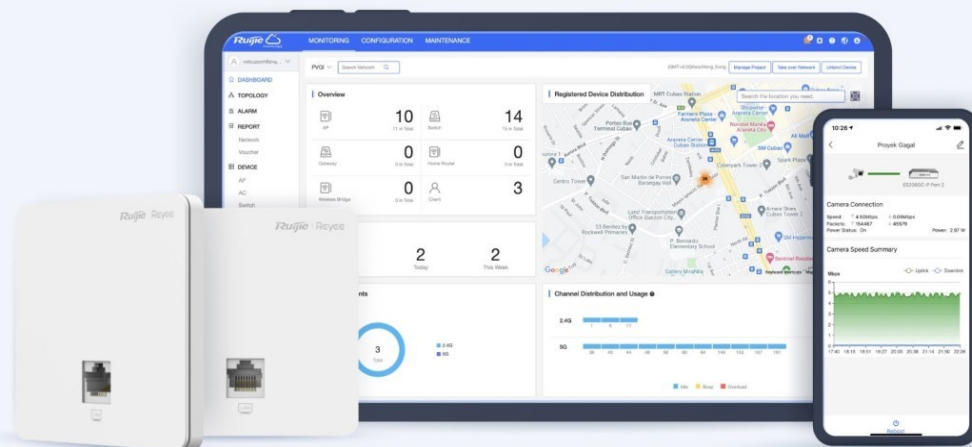


### Smart AI Roaming Enhances Wireless Experience Anywhere You Go



### Cloud, Make Your Business Easy

- Self-organizing network
- Cloud portal authentication
- Remote monitoring and maintenance
- Upgrade firmware via Cloud
- APP library dynamically update



## Product Information

Model	RG-RAP1261
Product Type	Wall AP

## Hardware Specifications

Model	RG-RAP1261
<b>Wi-Fi Radio</b>	
6 GHz Wi-Fi	No
5 GHz Wi-Fi	Wi-Fi 4 (IEEE 802.11a/n) Wi-Fi 5 (IEEE 802.11ac) Wi-Fi 6 (IEEE 802.11ax)
2.4 GHz Wi-Fi	Wi-Fi 4 (IEEE 802.11b/g/n) Wi-Fi 6 (IEEE 802.11ax)
Operating band	IEEE 802.11b/g/n/ax, 2.400 GHz to 2.4835 GHz IEEE 802.11a/n/ac/ax, 5.150 GHz to 5.350 GHz, 5.470 GHz to 5.725 GHz, 5.725 GHz to 5.850 GHz  Note: Available bands vary with countries and regions. To use the preceding frequency bands, ensure that your country or region supports these frequency bands.
Radio design	Dual-radio 4 spatial streams • 2.4 GHz: 2 x 2, MU-MIMO • 5 GHz: 2 x 2, MU-MIMO
FEM	iFEM
6 GHz channel width	No
5 GHz channel width	Auto/20/40/80/160 MHz
2.4 GHz channel width	Auto/20/40 MHz
Maximum wireless data rate	2974 Mbps
6 GHz wireless data rate	No
5 GHz wireless data rate	2401 Mbps
2.4 GHz wireless data rate	573 Mbps

# Hardware Specifications

Model	RG-RAP1261
<p><b>Maximum transmit power</b></p>	<p>Frequency bands and maximum Effective Isotropic Radiated Power (EIRP):</p> <p>Note: Country specific restrictions apply.</p> <p>European Union &amp; United Kingdom:            2400–2483.5 MHz, EIRP ≤ 20 dBm            5150–5350 MHz, EIRP ≤ 23 dBm            5470–5725 MHz, EIRP ≤ 30 dBm</p> <p>United States:            2400–2483.5 MHz, max output power ≤ 30 dBm &amp; EIRP ≤ 36 dBm            5150–5250 MHz, max output power ≤ 30 dBm &amp; EIRP ≤ 36 dBm            5250–5350 MHz, max output power &lt; 24 dBm &amp; EIRP ≤ 30 dBm            5470–5725 MHz, max output power &lt; 24 dBm &amp; EIRP ≤ 30 dBm            5725–5850 MHz, max output power ≤ 30 dBm &amp; EIRP ≤ 36 dBm</p> <p>Myanmar:            2400–2483.5 MHz, EIRP ≤ 23 dBm            5725–5825 MHz, EIRP ≤ 30 dBm</p> <p>Thailand:            2400–2483.5 MHz, EIRP ≤ 20 dBm            5150–5350 MHz, EIRP ≤ 23 dBm            5470–5725 MHz, EIRP ≤ 30 dBm            5725–5825 MHz, EIRP ≤ 30 dBm</p> <p>Indonesia:            2400–2483.5 MHz, EIRP ≤ 27 dBm            5150–5350 MHz, EIRP ≤ 23 dBm            5725–5825 MHz, EIRP ≤ 23 dBm</p> <p>Egypt:            2400–2483.5 MHz, EIRP ≤ 20 dBm            5150–5350 MHz, EIRP ≤ 23 dBm</p> <p>Vietnam:            2400–2483.5 MHz, EIRP ≤ 23 dBm            5150–5350 MHz, EIRP ≤ 23 dBm            5470–5725 MHz, EIRP ≤ 30 dBm            5725–5850 MHz, EIRP ≤ 30 dBm</p>
<p><b>Maximum transmit power (6 GHz)</b></p>	<p>No</p>
<p><b>Maximum transmit power (5 GHz)</b></p>	<p>Combined power: 21 dBm (single-stream power: 18 dBm)            Note: The transmit power varies according to regulations in different countries and regions.</p>
<p><b>Maximum transmit power (2.4 GHz)</b></p>	<p>Combined power: 21 dBm (single-stream power: 18 dBm)            Note: The transmit power varies according to regulations in different countries and regions.</p>
<p><b>Coverage range</b></p>	<p>45 m<sup>2</sup> (484.38 square ft.)            Note: The data is obtained in an ideal environment without</p>

# Hardware Specifications

Model	RG-RAP1261
	obstruction. The signal coverage radius depends on client performance and environmental interference.
<b>Modulation</b>	OFDM: BPSK @ 6/9 Mbps, QPSK @ 12/18 Mbps, 16-QAM @ 24 Mbps, 64-QAM @ 48/54 Mbps DSSS: DBPSK @ 1 Mbps, DQPSK @ 2 Mbps, and CCK @ 5.5/11 Mbps MIMO-OFDM: BPSK, QPSK, 16-QAM, 64-QAM, 256-QAM and 1024-QAM OFDMA
<b>Receive sensitivity</b>	11b: -91 dBm (1 Mbps), -88 dBm (5.5 Mbps), -85 dBm (11 Mbps) 11a/g: -89 dBm (6 Mbps), -80 dBm (24 Mbps), -76 dBm (36 Mbps), -71 dBm (54 Mbps) 11n: -83 dBm (MCS0), -65 dBm (MCS7), -83 dBm (MCS8), -65 dBm (MCS15) 11ac: 20 MHz: -83 dBm (MCS0), -57 dBm (MCS9) 11ac: 40 MHz: -79 dBm (MCS0), -57 dBm (MCS9) 11ac: 80 MHz: -76 dBm (MCS0), -51 dBm (MCS9) 11ac: 160 MHz: -76 dBm (MCS0), -50 dBm (MCS9) 11ax: 20 MHz: -85 dBm (MCS0), -58 dBm (MCS11) 11ax: 40 MHz: -82 dBm (MCS0), -54 dBm (MCS11) 11ax: 80 MHz: -79 dBm (MCS0), -52 dBm (MCS11) 11ax: 160 MHz: -76 dBm (MCS0), -49 dBm (MCS11)
<b>Antenna</b>	
<b>Antenna</b>	Integrated 2.4 GHz and 5 GHz: 2 built-in omnidirectional antennas
<b>Antenna horizontal orientation</b>	No
<b>Antenna vertical orientation</b>	No
<b>Antenna gain (6 GHz)</b>	No
<b>Antenna gain (5 GHz)</b>	3.00 dBi
<b>Antenna gain (2.4 GHz)</b>	3.00 dBi
<b>Dimensions and Weight</b>	
<b>Product dimensions (W x D x H)</b>	86 mm x 42.4 mm x 86 mm (3.39 in. x 1.67 in. x 3.39 in.)
<b>Color</b>	White
<b>Weight</b>	≤ 0.16 kg (0.35 lbs.) (without packaging materials)

# Hardware Specifications

Model	RG-RAP1261
Shipping weight	≤ 0.19 kg (0.42 lbs.)
<b>Port Specifications</b>	
Number of 10/100/1000BASE-T ports	2
Reset button	1
LEDs	1 x system status LED
<b>Power Supply and Consumption</b>	
Power supply	PoE/PoE+
Local power supply	No
Dimensions of the DC connector	No
PoE In standard	<ul style="list-style-type: none"><li>• IEEE 802.3af (PoE)</li><li>• IEEE 802.3at (PoE+)</li></ul>
PoE budget	No
Maximum power consumption	10.2 W
<b>Environment and Reliability</b>	
Operating temperature	0°C to 40°C (32°F to 104°F)
Storage temperature	-40°C to +70°C (-40°F to +158°F)
Operating humidity	5% RH to 95% RH (non-condensing)
Storage humidity	5% RH to 95% RH (non-condensing)
Mounting options	Junction box
IP rating	No
Surge protection	Ethernet port: ±2 kV for common mode
MTBF	400,000 hours
<b>Certification and Regulatory Compliance</b>	
RoHS	Yes
Safety compliance	EN 62368-1

## / Hardware Specifications

Model	RG-RAP1261
EMC	EN 55032 EN 55035 EN 61000-3-3 EN 61000-3-2 EN 301489-1 EN 301489-3 EN 301489-17
RF	EN 300 328 EN 301 893 EN 300 440
Certification	CE, CB
<b>System Specifications</b>	
Flash memory	128 MB
RAM	256 MB DDR3

# Software Specifications

Model	RG-RAP1261
<b>Basic Configurations</b>	
AP mode	Yes
Routing mode	Yes
Internet access mode	Static IP address Static IPv6 address Dynamic IP address Dynamic IPv6 address PPPoE
<b>Interface</b>	
IPTV transparent transmission	Yes
<b>Ethernet Interface</b>	
PPPoE clients	Yes
<b>Ethernet Switching</b>	
IEEE 802.1Q VLAN	Yes
<b>WLAN</b>	
Maximum number of associated wireless clients	64 (2.4 GHz) 256 (5 GHz) 256 (2.4 GHz and 5 GHz enabled)
Recommended number of associated wireless clients	<ul style="list-style-type: none"> <li>● Support for IEEE 802.11ax and 160 MHz:               <ul style="list-style-type: none"> <li>16 (2.4 GHz)</li> <li>94 (5 GHz)</li> </ul> </li> <li>110 (2.4 GHz and 5 GHz enabled)</li> <li>● Support for IEEE 802.11ax and 80 MHz:               <ul style="list-style-type: none"> <li>16 (2.4 GHz)</li> <li>64 (5 GHz)</li> </ul> </li> <li>80 (2.4 GHz and 5 GHz enabled)               <ul style="list-style-type: none"> <li>● Support for IEEE 802.11ac:                   <ul style="list-style-type: none"> <li>8 (2.4 GHz)</li> <li>32 (5 GHz)</li> </ul> </li> </ul> </li> <li>40 (2.4 GHz and 5 GHz enabled)</li> </ul>
Maximum number of SSIDs	8
Radio-based client limiting	Yes
Layer 2 isolation	Yes

## Software Specifications

Model	RG-RAP1261
OFDMA	Yes
WMM	Yes
DFS	Yes
MLO	No
4K-QAM	No
Different SSIDs for the same VLAN	Yes
Enabling/Disabling MLO	No
AP load balancing	Yes
Beamforming	Yes
802.11k/v roaming	Yes
Fast transition (802.11r)	Yes
Layer 2 roaming	Yes
Layer 3 roaming	Yes
AI roaming	Yes
PSK authentication	Yes
Static allowlist	Yes
Adjusting the transmit power for beacon and probe frames	Yes
Encryption mode (WPA-PSK, WPA2-PSK, WPA/WPA2-PSK)	Yes
OWE (Enhanced Open)	
WPA3-SAE	Yes
WPA2-PSK/WPA3-SAE	
Number of blocklists and allowlists based on MAC addresses (single SSID)	256
Number of global blocklists/allowlists	256

# Software Specifications

Model	RG-RAP1261
Mesh management	Yes
AP Mesh	Yes
AP portal authentication	Yes
Maximum number of devices that can be managed	300
One-Click Network Optimization	Yes
Static blacklist	Yes
<b>IP Service</b>	
ARP binding	Yes
IPv4 ping	Yes
IPv6 ping	Yes
Traceroute	Yes
Static/Dynamic NAT	Yes
DHCP server	Yes
IPv6	Yes
<b>Authentication</b>	
802.1X authentication	Yes
<b>Network Management and Monitoring</b>	
Wireless repeater mode	Yes
Web login information	Single-device login address: 10.44.77.254 Network-wide login address: 10.44.77.253 Default password: admin
Network-wide configuration and management	Yes
Ruijie Reyee App management	Yes
eWeb management	Yes
Ruijie Cloud management	Yes

## Software Specifications

Model	RG-RAP1261
SNMP	Yes
Configuration synchronization among the app, eWeb, and Ruijie Cloud	Yes
Displaying device information on Ruijie Cloud	Yes

## Package Contents

Model	RG-RAP1261
<b>Package Contents</b>	
<b>Package Contents</b>	1 x AP 2 x Cross pan head screws (M4 x 40 mm) 1 x User Manual 1 x Warranty Card
<b>Accessories</b>	
<b>Power adapter</b>	No

*Ruijie* | ReYee

 Redefine your easy network



**Ruijie Networks Co., Ltd.**

Official Website: <https://Reyee.Ruijie.com>