

RG-NBS5200-24SFP/8GT4XS

24-port Gigabit Layer 3 Non-PoE Switch



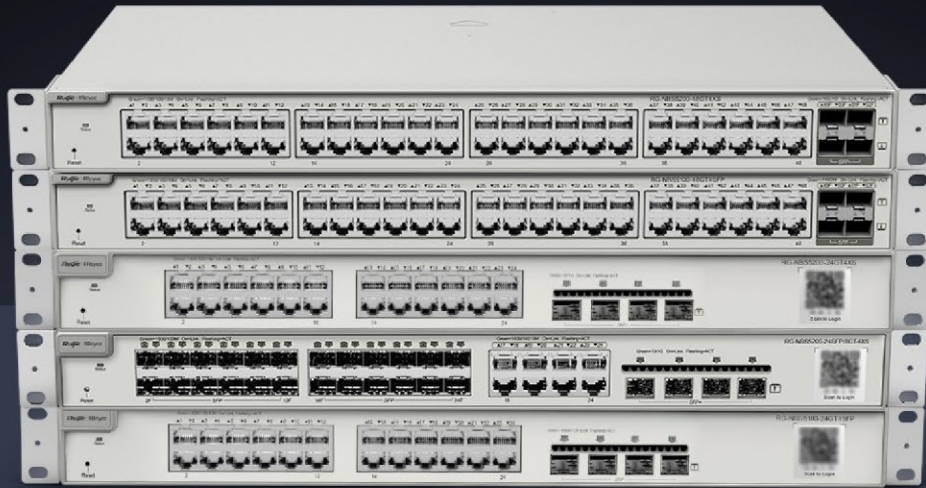
Highlights

- 24-Port SFP Layer 3 non-PoE switch, 8 Combo ports with 4 SFP+ uplink
- Enterprise-class Quality Ensures High Performance
- 6KV surge protection reduces the possibility of port damage
- Multiple Security Policies Protect Your Network
- Lifetime management on Ruijie Cloud at anytime anywhere

Highlight Features

RG-NBS5000 Series Switch

High performance Layer 3 switch for core/aggregation



Dynamic Routing



6kV Surge Protection



5 Years Warranty

Enterprise-class Quality Ensures High Performance

Link Aggregation

IGMP Snooping

VLAN



Highlight Features

Enterprise-class Quality Ensures High Performance

Link Aggregation

IGMP Snooping

VLAN

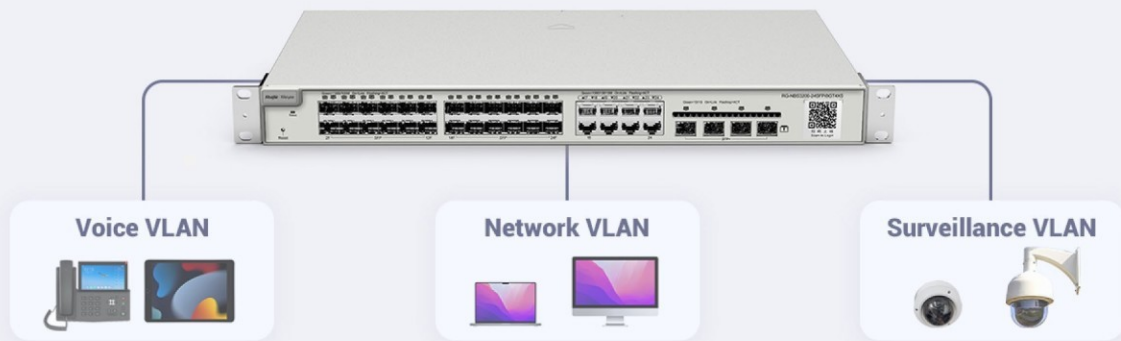


Enterprise-class Quality Ensures High Performance

Link Aggregation

IGMP Snooping

VLAN



Highlight Features

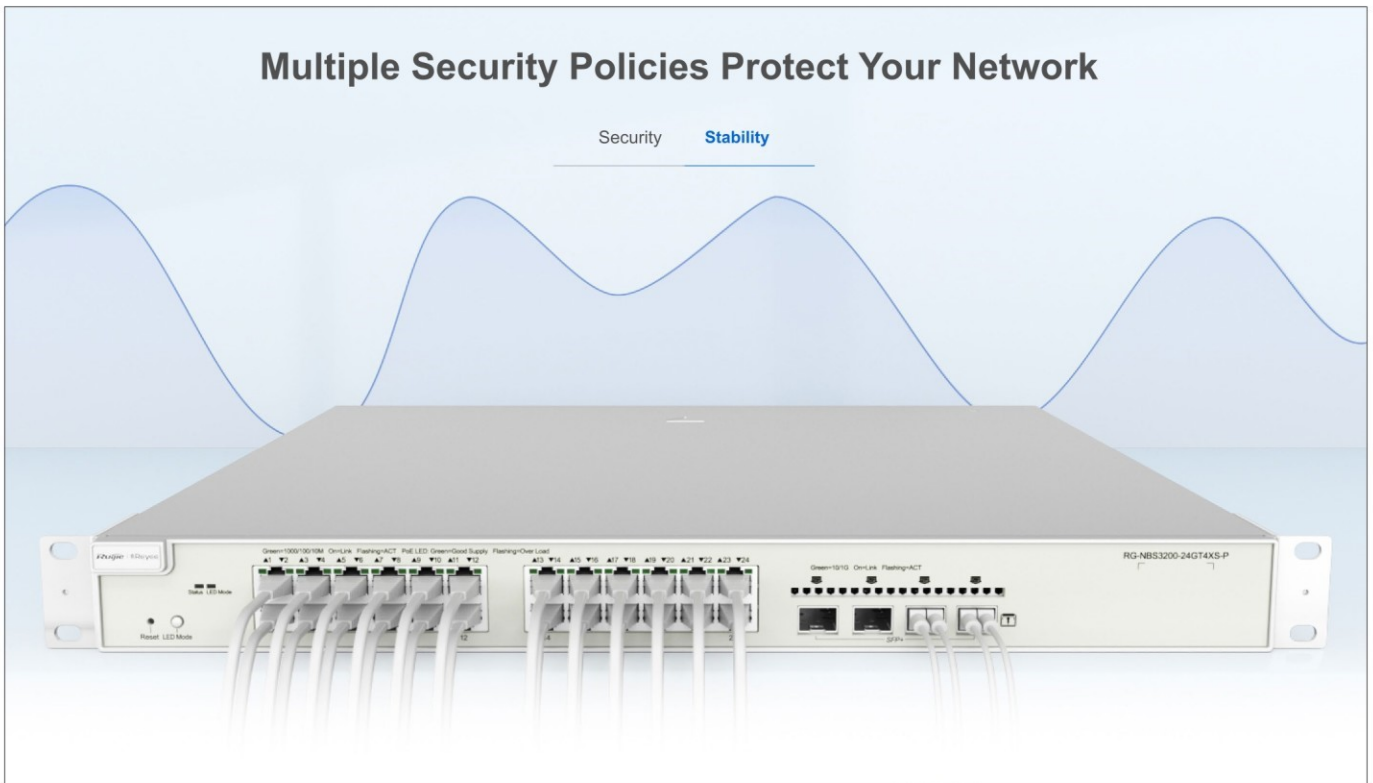
Multiple Security Policies Protect Your Network

Security Stability



Multiple Security Policies Protect Your Network

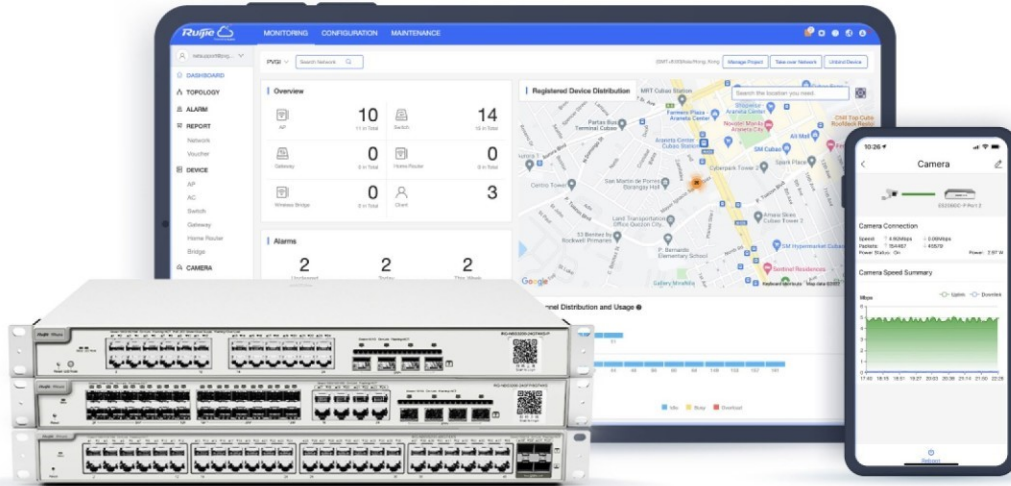
Security Stability



Highlight Features

Cloud, Make Your Business Easy

- SON, zero touch provisioning to Cloud
- Monitor switch statistics at anytime anywhere
- Configure VLANs on Ruijie Cloud APP
- Easy maintenance, save onsite time and cost



Product Information

Model	RG-NBS5200-24SFP/8GT4XS
Product Category	Layer 3

Hardware Specifications

Model	RG-NBS5200-24SFP/8GT4XS
Product Information	
Warranty	5 years
Port Specifications	
Total number of RJ45 ports	8 (including eight combo ports)
Total number of optical ports	28 (including eight combo ports)
Number of 1GE combo ports	8
Number of 1GE SFP ports	24 (including eight combo ports)
Number of 10GE SFP+ ports	4
Number of 10/100BASE-T ports	No
Number of 10/100/1000BASE-T ports	8 (including eight combo ports)
Number of 10/100/1000/2500BASE-T ports	No
Number of 100/1000/2.5G/5G/10GBASE-T ports	No
Module slots	No
Reset button	1
DIP switch	No
Power Supply and Consumption	
Power input	220 V AC power supply: <ul style="list-style-type: none">• Rated input voltage: 100 V AC to 240 V AC, 50/60 Hz• Maximum input voltage: 90 V AC to 264 V AC, 47 Hz to 63 Hz• Maximum input current: 2 A
Maximum power consumption	41.8 W

Hardware Specifications

Model	RG-NBS5200-24SFP/8GT4XS
Power supply	Fixed power supply
System Specifications	
RAM	512 MB
Flash memory	256 MB
Forwarding rate	96 Mpps
Switching capacity	128 Gbps(bit/s)
Dimensions and Weight	
Casing	Metal
Product dimensions (W x D x H)	440 mm x 267.5 mm x 43.6 mm (17.32 in. x 10.53 in. x 1.72 in.)
Weight	3.35 kg (7.39 lbs) (without packaging materials)
Shipping weight	4.9 kg (10.8 lbs)
Environment and Reliability	
Hot swapping of fan modules	No
Fan	2 x fixed fans
Cooling	Air cooling, left-to-right airflow
Acoustic noise	25°C (77°F): 45 dB
Mounting options	Rack
Hot swapping of cables	Service ports support hot swapping of cables.
MTBF	400,000 hours
Operating temperature	0°C to +50°C (32°F to 122°F)
Storage temperature	-40°C to +70°C (-40°F to +158°F)
Operating humidity	10% RH to 90% RH (non-condensing)
Storage humidity	5% RH to 95% RH (non-condensing)
Altitude	Operating altitude: -500 m to +5,000 m (-1,640.42 ft. to +16,404.20 ft.)

/ Hardware Specifications

Model	RG-NBS5200-24SFP/8GT4XS
	Storage altitude: -500 m to +5,000 m (-1,640.42 ft. to +16,404.20 ft.)
Corrosion class	No
ESD protection	Contact discharge: 6 kV Air discharge: 8 kV
Surge protection	Service port: ± 6 kV for common mode Power connector: ± 6 kV for both common mode and differential mode
Certification and Regulatory Compliance	
EMC	EN 55032 EN 61000-3-2 EN 61000-3-3 EN 55035 EN 300 386
Safety compliance	IEC 62368-1
Certification	CE, FCC

Software Specifications

Model	RG-NBS5200-24SFP/8GT4XS
Authentication	
RADIUS	Yes
802.1X authentication	Yes
Port-based 802.1X authentication	Yes
MAC address-based 802.1X authentication	Yes
Guest VLAN	Yes
Basic Configurations	
PoE watchdog	No
Online upgrade	Yes
Ethernet Switching	
Maximum number of VLANs	4094
Maximum number of MAC address entries	16000
Interface flow control	Yes
MAC address-based VLAN	No
IP subnet - based VLAN assignment	No
IEEE 802.1Q VLAN	Yes
Basic QinQ	No
VLAN configuration supported on LAN ports	Yes
Voice VLAN	Yes
STP (IEEE 802.1d)	Yes
RSTP (IEEE 802.1w)	Yes
MSTP (IEEE 802.1s)	Yes
LLDP	Yes

Software Specifications

Model	RG-NBS5200-24SFP/8GT4XS
LLDP-MED	Yes
Static MAC address	Yes
MAC address filtering	Yes
Static aggregation	Yes
LACP	Yes
Inbound or outbound rate limiting based on interface traffic	Yes
Gateway Features	
802.1p priority-based traffic classification	Yes
DSCP priority-based traffic classification	Yes
Egress queues based on 802.1p and DSCP priorities	Yes
SP	Yes
WRR	Yes
SP+WRR	Yes
Global QoS	Yes
Interface	
Jumbo frame length (MTU)	9216 bytes (interface configuration mode)
EEE	Yes
Cable test	Yes
IP Routing	
Maximum number of IPv4 static routes	500
IPv6 routing table size (network route)	128
Maximum number of IPv6 static routes	128

Software Specifications

Model	RG-NBS5200-24SFP/8GT4XS
IPv4 static route	Yes
IPv6 static route	Yes
OSPFv2	Yes
OSPFv3	Yes
IP Service	
Maximum number of ARP entries	2000
IPv4 routing table size (host route)	6000
ARP	Yes
IPv4 ping	Yes
IPv4 traceroute	Yes
IPv6	Yes
ICMPv6	Yes
IPv6 ping	Yes
IPv6 traceroute	Yes
DNS client	Yes
DNSv6 client	Yes
DHCP relay	Yes
DHCP server	Yes
DHCP client	Yes
Multicast	
IGMPv1 snooping	Yes
IGMPv2 snooping	Yes
Basic IGMPv3 snooping	Yes
Full IGMPv3 snooping	Yes

Software Specifications

Model	RG-NBS5200-24SFP/8GT4XS
IGMP filtering	Yes
IGMPv1, v2, and v3	Yes
Network Management and Monitoring	
Port mirroring	Yes
Mirroring	Yes
HTTP login	Yes
HTTPS login	Yes
RLOG	Yes
SON	Yes
Syslog	Yes
Client auto-discovery	Yes
PoE service failure	No
PoE power overload	No
SSH	No
Camera detection	Yes
Loop alarm	Yes
MAC address entries	Yes
IP address pool conflicts	Yes
Full ARP table	Yes
eWeb management	Yes
Ruijie Cloud management	Yes
Ruijie Reyee App management	Yes
SNMPv1, v2c, and v3	Yes
Reliability	

Software Specifications

Model	RG-NBS5200-24SFP/8GT4XS
Number of VCS members	2
System dual backup	Yes (Only supported on devices with a factory-installed software version of ReeyeOS 2.320 or later)
Enabling dual backup for the partition Uboot (based on a single flash memory)	Yes
Load balancing	No
ERPS	Yes:Stand-alone No:Hot standby
Security	
Maximum number of ACEs	Number of ACEs in the inbound direction of an interface: 1900 Number of ACEs in the outbound direction of an interface: 0
Port isolation	Yes
Broadcast storm control	Yes
Multicast storm control	Yes
Unknown unicast storm control	Yes
DHCP snooping	Yes
Standard ACL	Yes
Extended MAC ACL	Yes
Extended IP ACL	Yes
IPv6 ACL	Yes
IP-MAC-port binding	Yes
ARP anti-spoofing	Yes
IP source guard	Yes
CPU Protection Policy	Yes
System Performance Capacity	
Recommended camera limit	200 W H265: 350 400 W H265: 170

Package Contents

Model	RG-NBS5200-24SFP/8GT4XS
Device	
Device	1
Accessories	
Rubber pad	4
Power cord retention clip	1
Screw	8 M4 x 8 mm cross recessed countersunk head screws
Grounding cable	1 x 1 m (3.28 ft.)
Power cord	1 x 1.5 m (4.92 ft.)
Rack-mount bracket	2
Manual	
User Manual	1
Warranty Card	1

Ruijie | **Reyee**

 **R**edefine **y**our **e**asy **n**etwork



Ruijie Networks Co., Ltd.

Official Website: <https://Reyee.Ruijie.com>