



Dual-Illumination Motorised Lens Turret Camera

CODE: MTURVIP4KS4-IL-VW-A



People & Vehicle Detection



Built-In Microphone



White Light & IR



Triple Stream Support

Camera

Image Sensor	1/2.8" CMOS	
Video Compression	H.265+ / H.265 / H.264+ / H.264	
Resolution	8MP (1 to 20fps), 6MP, 4MP, 2K, 2MP (1 to 25fps)	
Electronic Shutter	1/3s to 1/100,000s	
Minimum Illumination	0.02 lux at F1.6 (AGC on); 0 lux with IR	
IR Range	IR Range: 50m White Light Range: 40m	
Lens	2.8mm to 12mm	
Field of View	Horizontal: 97.3° to 34° Vertical: 52.3° to 17.7° Diagonal: 116° to 37°	
Focus	Motorised	
Day & Night	ICR	
Detect	Wide-Angle	88m (288ft.)
	Telephoto	277m (908ft.)
Observe	Wide-Angle	35m (114ft.)
	Telephoto	111m (364ft.)
Recognise	Wide-Angle	17m (56ft.)
	Telephoto	55m (180ft.)
Identify	Wide-Angle	8m (27ft.)
	Telephoto	28m (91ft.)

Image Correction	BLC, HLC, WDR, Digital NR
S/N Ratio	≥50dB

Interfaces

Network	RJ45
Audio	1CH audio input; 1CH built-in microphone
Storage	Micro SD card slot (supports up to 256GB)
Reset Button	Yes

Functions

Remote Monitoring	SuperLive Plus Mobile App / NVMS (used with Viper NVR)
Web Browser	Google Chrome; Microsoft Edge; Firefox; Safari
Online Connection	Simultaneous multi-stream real time transmission
Maximum Users for Monitoring	Up to 10 users (simultaneous)



Dual-Illumination Motorised Lens Turret Camera

CODE: MTURVIP4KS4-IL-VW-A

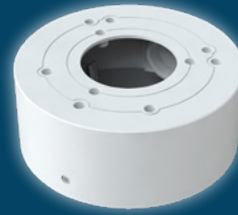
IP

8^{4K}
MP

⚙️ Functions (continued)

Network Protocol	UDP, IPv4, IPv6, DHCP, NTP, RTSP, RTP, RTCP, RTMP, PPPoE, DDNS, SMTP, FTP, 802.1x, SNMP, UPnP, HTTP, HTTPS, HTTP POST, P2P, QoS
Interface Protocol	ONVIF
Alarm Events	Video Motion Detection, Video Exception, SD Card Error, SD Card Full
Smart Events	Line Crossing Detection, Region Intrusion Detection (People & Vehicle), Abandoned/Missing Object Detection
Additional Functions	Watermark, Video Mask, Heartbeat, Password Protection, ANR, Image Distortion Correction

+ Compatible Accessories



Cable Management Ring
CODE: VIP-RING-03-WH



Wall Bracket
CODE: VIP-WALL-BK0203-W

📏 Parameters & Dimensions

Power Supply	DC12V / PoE
PoE	IEEE802.3af
Power Consumption	< 12W
Operating Environment	Temperature: -30°C to +60°C; Humidity: Less than 95% (non-condensing)
Storage Environment	Temperature: -30°C to +65°C; Humidity: Less than 95% (non-condensing)
Dimensions	Ø111.6mm x 99.6mm
Weight	0.66kg
Installation	Ceiling or wall mounted
Protection Grade	IP67
Certificate	UKCA, CE, FCC, PSTI 2023, RoHS, WEEE, REACH (EC1907/2006)