



8 Channel Dual Illumination Kit

CODE: VIPKITIP-8CH-4TUR6MPIL



1x 6MP Viper NVR with 2TB HDD (VIPER-NVR-6MP-8-2TB)

4x 6MP Smart Dual-Illumination Cameras (TURVIPS4-6IL-FW)

4x Cable Management Junction Boxes (VIP-RING-03-WH)

4x Pre-Made 18m Cat 5 Cables



People Detection



Built-In Microphone



Up to 10TB
SATA Capacity



Scheduled
Recording



Compatible with
SuperLive Plus



8 Channel Dual Illumination Kit

CODE: VIPKITIP-8CH-4TUR6MPIL



Up to 10TB Capacity



PTZ Control



Scheduled Recording



Dual-Stream Support

Video

Compression	H.265S / H.265+ / H.265 / H.264
IP Video Input	8CH IPC Input
Resolution	8MP; 6MP; 5MP; 4MP; 3MP; 1080P
Frame Rate	25fps
Network Bandwidth	Incoming: 64Mbps / Outgoing: 64Mbps
Output	HDMI: 3840 x 2160; 1920 x 1080; 1280 x 1024; 1024 x 768 VGA : 1920 x 1080; 1280 x 1024; 1024 x 768
Multi-Screen Display	1 / 4 / 6 / 8 / 9
Simultaneous Playback	Max. 8CH
Search	Time Slice; Time; Event; Tag; Smart Search (see below)
Smart Search	Colour coding to display camera footage across selected periods of time.
Functions	Play; Pause; FF; FB; Digital Zoom

Audio

Network Input	8CH IPC Input
Compression	G.711(U/A)

Events

Alarm Type	Manual, Sensor, Motion, Exception & Smart Events	
Alarm Trigger	Recording, Snapshot, Buzzer, Preset, Email	
Perimeter Protection	8CH People & Vehicle Classification (AI by IPC)	
Face	Face Detection	8CH (AI by IPC)
	Statistical Graph	Bar Graph
	Statistical Mode	By Day; Week; Month; Quarter; Custom Period
Video Metadata	People & Vehicle Attribute Analysis (AI by IPC)	



8 Channel Dual Illumination Kit

CODE: VIPKITIP-8CH-4TUR6MPIL

IP

6MP

Events (continued)

Fisheye	Fisheye Dewarping via NVMS or SuperLive Plus App
Plate Detection	Supported (AI by IPC)

System & Hardware

PoE Interface	RJ45 100Mbps x8	
PoE Standard	IEEE802.3AF/AT	
PoE Output Power	≤ 72W	
Plate Detection	Supported (AI by IPC)	
Protocol	TCP / IP, HTTP, HTTPS, 802.1, DHCP, DDNS, RTP, RTSP, RTCP, NTP, UPnP, SMTP, IPv6, IPv4, UDP, WebSocket, PPPoE, SNMP, IGMP, ONVIF	
Client Connection	Max. 64 Users Access	
OS	Embedded Linux	
Video Management Software (PC)	NVMS 2.11 (Standard or Professional)	
Mobile App (iOS or Android)	SuperLive Plus	
HDD	Supplied with 2TB Storage; SATA x1 (Max. 10TB)	
Backup	Local	USB Disk
	Network	Supported
USB	USB 2.0 x2	
Power Supply	DC48V/1.8A	
Power Consumption	< 5W (without HDD, PoE Off)	
Operating Environment	Temperature: -10°C to +50°C; Humidity: Less than 90% (non-condensing)	
Dimensions	255mm x 222mm x 42mm	
Certificate	UKCA, CE, FCC, PSTI 2023, RoHS, WEEE, REACH (EC1907/2006)	



8 Channel Dual Illumination Kit

CODE: VIPKITIP-8CH-4TUR6MPIL



People Detection



Built-In Microphone



White Light & IR



Dual Stream Support

Camera

Image Sensor	1/2.7" CMOS
Video Compression	H.265+ / H.265 / H.264+ / H.264
Resolution	6MP (1 to 20fps), 4MP (1 to 25fps), 2MP (1 to 25fps)
Electronic Shutter	1/2s to 1/100,000s
Minimum Illumination	0.007 lux at F1.6 (AGC on); 0 lux with IR
Light Range	IR Range: 30m White Light Range: 20m
Lens	2.8mm
Field of View	Horizontal: 110.5° Vertical: 57° Diagonal: 131°
Focus	Fixed
Day & Night	ICR
Image Correction	BLC, HLC, WDR, Digital NR
S/N Ratio	≥50dB
Detect	60m (196ft.)
Observe	24m (78ft.)
Recognise	12m (39ft.)
Identify	6m (20ft.)

Interfaces

Network	RJ45
Audio	1CH built-in microphone

Functions

Remote Monitoring	SuperLive Plus Mobile App / NVMS (used with Viper NVR)
Web Browser	IE (plug-in required); Google Chrome; Microsoft Edge; Firefox; Safari
Online Connection	Simultaneous multi-stream real time transmission
Maximum Users for Monitoring	Up to 3 users (simultaneous)
Network Protocol	UDP, IPv4, IPv6, DHCP, NTP, RTSP, 802.1x, HTTP
Interface Protocol	ONVIF
Smart Events	Line Crossing Detection, Region Intrusion Detection (People Only)



8 Channel Dual Illumination Kit

CODE: VIPKITIP-8CH-4TUR6MPIL

IP

6MP

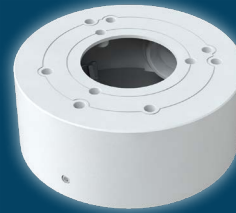
Functions (continued)

Additional Functions	Watermark, Video Mask, Heartbeat
Security	Video Encryption, Firmware Encryption, Configuration Encryption, Illegal Login Lock, IP Address Filtering, 802.1x Authentication, Basic and Digest Authentication for HTTP

Parameters & Dimensions

Power Supply	DC12V / PoE
PoE	IEEE802.3af
Power Consumption	< 6W
Operating Environment	Temperature: -30°C to +60°C; Humidity: Less than 95% (non-condensing)
Storage Environment	Temperature: -30°C to +65°C; Humidity: Less than 95% (non-condensing)
Dimensions	Ø94.6mm x 82.8mm
Weight	0.423kg
Installation	Ceiling or wall mounted
Protection Grade	IP67
Certificate	UKCA, CE, FCC, PSTI 2023, RoHS, WEEE, REACH (EC1907/2006)

Compatible Accessories



Cable Management Ring
CODE: VIP-RING-03-WH



Wall Bracket
CODE: VIP-WALL-BK0203-W

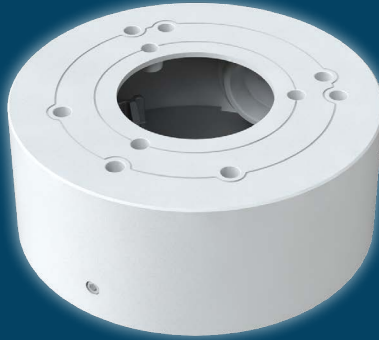


8 Channel Dual Illumination Kit

CODE: VIPKITIP-8CH-4TUR6MPIL

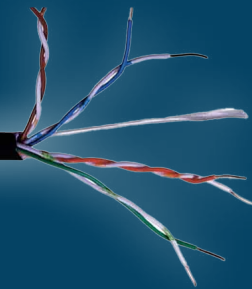
IP

6MP



Material	Aluminium Alloy
Colour	White
Load Bearing	The wall must be able to withstand at least 3x the weight of the camera and junction box <i>(Refer to Weight on this data sheet and the camera data sheet)</i>
Operating Environment	Temperature: -40°C to +60°C; Humidity: 10% to 90%

IP Rating	IP65
Inlets	Bottom & Side
Dimensions	Ø96mm x 38.8mm
Weight	0.135kg



Connector	CAT 5
Cable Length	18m
Insulation	High Density Polyethylene
Construction	4 Twisted Cable Pairs
Colour Code	Pair 1: White / Blue-Blue / White Pair 2: White / Orange-Orange / White Pair 3: White / Green-Green / White Pair 4: White / Brown-Brown / White

Sheath	PE External (Black)
Overall Diameter	5.2mm ± 0.3mm
Minimum Bending Radius	20mm
Impedance	100MHz ± 15Ω
Certification	ISO11801