

# RG-NBS7006

## Layer 3 Chassis Cloud Managed Switch



### Highlights

- Modular design provides scalability and flexibility
- High-Level Redundancy, Ensuring Nonstop Service
- Whole Network Solution Specially Designed for SMB Scenarios
- Lifetime management on Ruijie Cloud at anytime anywhere

# Highlight Features

## RG-NBS7006 Reyee First Chassis Switch Designed for SMB

6 x 1RU Slot  
2 x Supervisor Engine Module



7 Optional  
Line Cards



32,000  
MAC Address



8,000  
ARP Table



1.92 Tbps  
Switching Capacity



1440 Mpps  
Packet Forwarding Rate

## Modular Design: Scalability, and Flexibility

Support 7 types of line cards, up to 96 ports full 10 Gigabit



## High-Level Redundancy, Ensuring Nonstop Service

Redundant Modules

Virtual Cluster Switching (VCS)

4 power slots & 2 fans: ensuing service continuity

4 x Power



2 x FAN

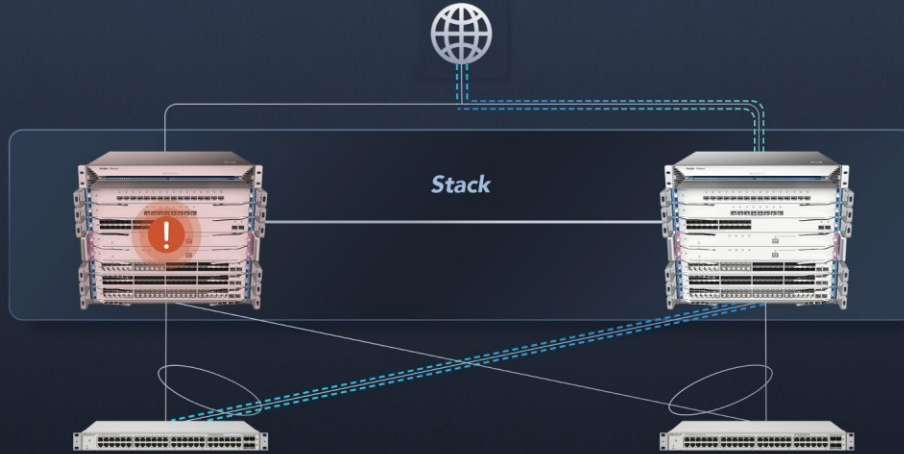
# Highlight Features

## High-Level Redundancy, Ensuring Nonstop Service

Redundant Modules

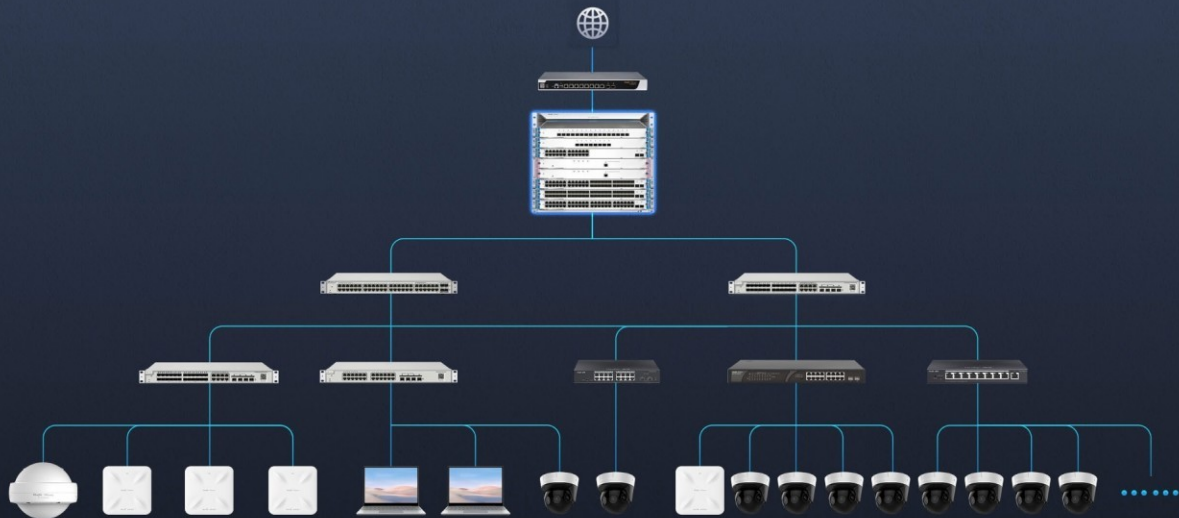
Virtual Cluster Switching (VCS)

Virtual Cluster Switching (VCS): service failover within seconds



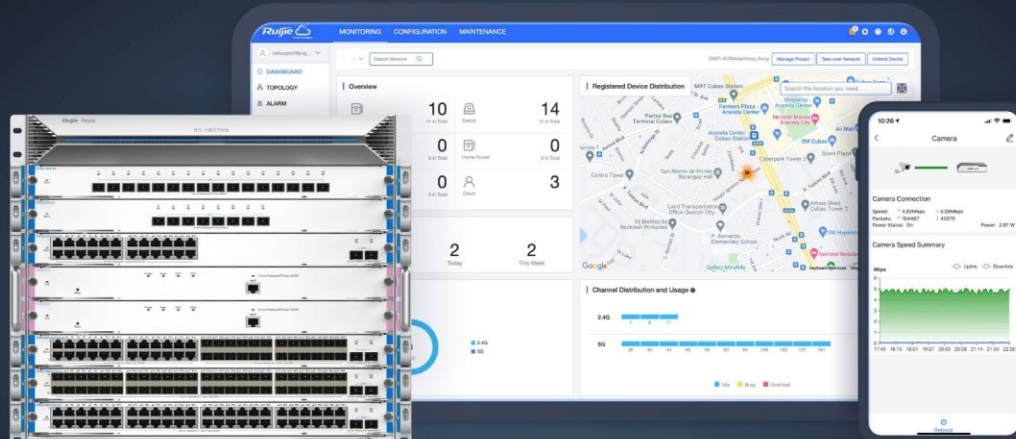
## Whole Network Solution Specially Designed for SMB Scenarios

Up to 4000 terminal devices or 2000 CCTV (2mp H.265) can be accessed



## Cloud, Make Your Business Easy

- SON, zero touch provisioning to Cloud
- Monitor switch statistics at anytime anywhere
- Configure VLANs on Ruijie Cloud APP
- Easy maintenance, save onsite time and cost



## Power Supply and Fan

<b>RG-PA600I-FS</b>	RG-NBS7006 Power Module (support redundancy, AC, 600W)
<b>M7006-FAN</b>	NBS7006-FAN

## Line Card & Service Module

<b>M7000-24GT2XS-EA</b>	24 Gigabit Ethernet copper port (RJ45) + 2 10-gigabit Ethernet fiber port (SFP+,LC)
<b>M7000-48GT2XS-EA</b>	48 Gigabit Ethernet copper port (RJ45) + 2-port 10-gigabit Ethernet fiber port (SFP+,LC)
<b>M7000-24SFP2XS-EA</b>	24 Gigabit fiber port (SFP,LC) + 2 10-Gigabit Ethernet fiber port (SFP+,LC)
<b>M7000-48SFP2XS-EA</b>	48 Gigabit fiber port (SFP,LC) + 2 10-Gigabit Ethernet fiber port (SFP+,LC)
<b>M7000-24GT24SFP2XS-EA</b>	24 Gigabit Ethernet copper port (RJ45)+ 24 Gigabit fiber port (SFP,LC)+ 2 10-gigabit Ethernet fiber port (SFP+,LC)
<b>M7000-8XS-EA</b>	8 10-Gigabit Ethernet fiber port (SFP+,LC)
<b>M7000-16XS-EA</b>	16 10-gigabit Ethernet fiber port (SFP+,LC)
<b>M7006-CM</b>	Supervisor Engine Module

## Product Information

<b>Model</b>	<b>RG-NBS7006</b>
<b>Product Category</b>	Layer 3

## Hardware Specifications

<b>Model</b>	<b>RG-NBS7006</b>
<b>Product Information</b>	
<b>Warranty</b>	5 years
<b>Port Specifications</b>	
<b>Total number of RJ45 ports</b>	Determine the quantity based on the type and number of line cards.
<b>Total number of optical ports</b>	No
<b>Number of 1GE combo ports</b>	No
<b>Number of 1GE SFP ports</b>	No
<b>Number of 10GE SFP+ ports</b>	Determine the quantity based on the type and number of line cards.
<b>Number of 10/100BASE-T ports</b>	No
<b>Number of 10/100/1000BASE-T ports</b>	Determine the quantity based on the type and number of line cards.
<b>Number of 10/100/1000/2500BASE-T ports</b>	No
<b>Number of 100/1000/2.5G/5G/10GBASE-T ports</b>	No
<b>Module slots</b>	2 supervisor module slots 6 line card slots 4 system power module slots
<b>Reset button</b>	1
<b>DIP switch</b>	No
<b>Power Supply and Consumption</b>	
<b>Power input</b>	RG-PA600I-FS (AC input): <ul style="list-style-type: none"><li>• Rated input voltage: 100 V AC to 240 V AC, 50/60 Hz</li><li>• Maximum input voltage: 90 V AC to 264 V AC, 47 Hz to 63 Hz</li><li>• Maximum input current: 10 A</li></ul>

# Hardware Specifications

Model	RG-NBS7006
Maximum power consumption	100 W
Power output	RG-PA600I-FS: 90 V AC to 290 V AC: 12 V DC (output voltage), 50 A (maximum output current)
Power supply	Power module
<b>System Specifications</b>	
RAM	Supervisor module/Line card: 1 GB DDR3
Flash memory	Supervisor module/Line card: 256 MB
Forwarding rate	1428.48 Mpps
Switching capacity	1.92 Tbps(bit/s)
<b>Dimensions and Weight</b>	
Casing	Metal
Product dimensions (W x D x H)	Chassis without cable management bracket: 442 mm x 410 mm x 396 mm (17.4 in. x 16.14 in. x 15.59 in.)  EA card: 438.5 mm x 196 mm x 40.2 mm (17.26 in. x 7.72 in. x 1.58 in.)  CM card: 438.5 mm x 196 mm x 40.2 mm (17.26 in. x 7.72 in. x 1.58 in.)
Weight	25 kg (55.12 lbs) (including the empty chassis and two fan modules, without packaging materials)
Shipping weight	30 kg (66.14 lbs) (including packaging materials, empty chassis, and two fan modules)
<b>Environment and Reliability</b>	
Hot swapping of fan modules	Yes
Fan	2 x fan modules (2 x fan modules for factory delivery)
Cooling	Device: Air cooling, front-to-rear airflow + left-to-rear airflow + right-to-rear airflow Line card: Air cooling, right-to-rear airflow Power module: Air cooling, front-to-rear airflow + side-to-rear airflow
Acoustic noise	35°C (95°F): 55 dB 50°C (122°F): 50 dB

# Hardware Specifications

Model	RG-NBS7006
Mounting options	Rack
Hot swapping of cables	Power connectors, all ports of line cards, and all ports of the supervisor module support hot swapping of cables.
MTBF	400,000 hours
Operating temperature	0°C to +50°C (32°F to 122°F)
Storage temperature	-40°C to +70°C (-40°F to +158°F)
Operating humidity	10% RH to 90% RH (non-condensing)
Storage humidity	5% RH to 95% RH (non-condensing)
Altitude	Operating altitude: -500 m to +5,000 m (-1,640.42 ft. to +16,404.20 ft.) Storage altitude: -500 m to +5,000 m (-1,640.42 ft. to +16,404.20 ft.)
Corrosion class	No
ESD protection	Contact discharge: 6 kV Air discharge: 8 kV
Surge protection	Service port: ±6 kV for common mode Power connector: ±6 kV for both common mode and differential mode
<b>Certification and Regulatory Compliance</b>	
EMC	EN 55032 EN 61000-3-2 EN 61000-3-3 EN 55035 EN 300 386
Safety compliance	IEC 62368-1
Certification	CE

# Software Specifications

Model	RG-NBS7006
<b>Authentication</b>	
<b>RADIUS</b>	Yes
<b>802.1X authentication</b>	Yes
<b>Port-based 802.1X authentication</b>	Yes
<b>MAC address-based 802.1X authentication</b>	Yes
<b>Guest VLAN</b>	Yes
<b>Basic Configurations</b>	
<b>PoE watchdog</b>	No
<b>Online upgrade</b>	Yes
<b>Ethernet Switching</b>	
<b>Maximum number of VLANs</b>	4094
<b>Maximum number of MAC address entries</b>	32000
<b>Interface flow control</b>	Yes
<b>MAC address-based VLAN</b>	No
<b>IP subnet - based VLAN assignment</b>	No
<b>IEEE 802.1Q VLAN</b>	Yes
<b>Basic QinQ</b>	No
<b>VLAN configuration supported on LAN ports</b>	Yes
<b>Voice VLAN</b>	Yes
<b>STP (IEEE 802.1d)</b>	Yes
<b>RSTP (IEEE 802.1w)</b>	Yes
<b>MSTP (IEEE 802.1s)</b>	Yes
<b>LLDP</b>	Yes

# Software Specifications

Model	RG-NBS7006
LLDP-MED	Yes
Static MAC address	Yes
MAC address filtering	Yes
Static aggregation	Yes
LACP	Yes
Inbound or outbound rate limiting based on interface traffic	Yes
<b>Gateway Features</b>	
802.1p priority-based traffic classification	Yes
DSCP priority-based traffic classification	Yes
Egress queues based on 802.1p and DSCP priorities	Yes
SP	Yes
WRR	Yes
SP+WRR	Yes
Global QoS	Yes
<b>Interface</b>	
Jumbo frame length (MTU)	9216 bytes (interface configuration mode)
EEE	Yes
Cable test	Yes
<b>IP Routing</b>	
Maximum number of IPv4 static routes	2000
IPv6 routing table size (network route)	2000
Maximum number of IPv6 static routes	500

# Software Specifications

Model	RG-NBS7006
IPv4 static route	Yes
IPv6 static route	Yes
OSPFv2	Yes
OSPFv3	Yes
IP Service	
Maximum number of ARP entries	8000
IPv4 routing table size (host route)	12000
ARP	Yes
IPv4 ping	Yes
IPv4 traceroute	Yes
IPv6	Yes
ICMPv6	Yes
IPv6 ping	Yes
IPv6 traceroute	Yes
DNS client	Yes
DNSv6 client	Yes
DHCP relay	Yes
DHCP server	Yes
DHCP client	Yes
Multicast	
IGMPv1 snooping	Yes
IGMPv2 snooping	Yes
Basic IGMPv3 snooping	Yes
Full IGMPv3 snooping	Yes

# Software Specifications

Model	RG-NBS7006
IGMP filtering	Yes
IGMPv1, v2, and v3	Yes
<b>Network Management and Monitoring</b>	
Fan speed adjustment	Intelligent speed adjustment
Port mirroring	Yes
Mirroring	Yes
HTTP login	Yes
HTTPS login	Yes
RLOG	Yes
SON	Yes
Syslog	Yes
Client auto-discovery	Yes
PoE service failure	No
PoE power overload	No
SSH	No
Camera detection	Yes
Loop alarm	Yes
MAC address entries	Yes
IP address pool conflicts	Yes
Full ARP table	Yes
eWeb management	Yes
Ruijie Cloud management	Yes
Ruijie Reyee App management	Yes
SNMPv1, v2c, and v3	Yes

# Software Specifications

Model	RG-NBS7006
<b>Reliability</b>	
Number of VCS members	2
System dual backup	Yes
Enabling dual backup for the partition Uboot (based on a single flash memory)	Yes
Load balancing	No
ERPS	No
<b>Security</b>	
Maximum number of ACEs	Number of ACEs in the inbound direction of an interface: 1900 Number of ACEs in the outbound direction of an interface: 0
Port isolation	Yes
Broadcast storm control	Yes
Multicast storm control	Yes
Unknown unicast storm control	Yes
DHCP snooping	Yes
Standard ACL	Yes
Extended MAC ACL	Yes
Extended IP ACL	Yes
IPv6 ACL	Yes
IP-MAC-port binding	Yes
ARP anti-spoofing	Yes
IP source guard	Yes
CPU Protection Policy	Yes
<b>System Performance Capacity</b>	
Recommended camera limit	RG-NBS7006: Number of line cards x Recommended number of cameras per service interface board

## Software Specifications

Model	RG-NBS7006
	<p>Recommended number of cameras connected to the supervisor module: Not supported</p> <p>Recommended number of cameras connected to a line card:</p> <ul style="list-style-type: none"><li>200 W H265: 400</li><li>400 W H265: 200</li></ul>

## Package Contents

<b>Model</b>	<b>RG-NBS7006</b>
<b>Device</b>	
<b>Device</b>	1
<b>Accessories</b>	
<b>Rubber pad</b>	No
<b>Power cord retention clip</b>	No
<b>Screw</b>	12 M6 x 16 mm cross recessed countersunk head screws 18 M3 x 10 mm cross recessed countersunk head screws 12 M6 cage nuts
<b>Grounding cable</b>	1 x 2 m (6.56 ft.)
<b>Power cord</b>	No
<b>Rack-mount bracket</b>	2
<b>Manual</b>	
<b>User Manual</b>	1
<b>Warranty Card</b>	1

*Ruijie* | ReYee

 Redefine your easy network



**Ruijie Networks Co., Ltd.**

Official Website: <https://Reyee.Ruijie.com>